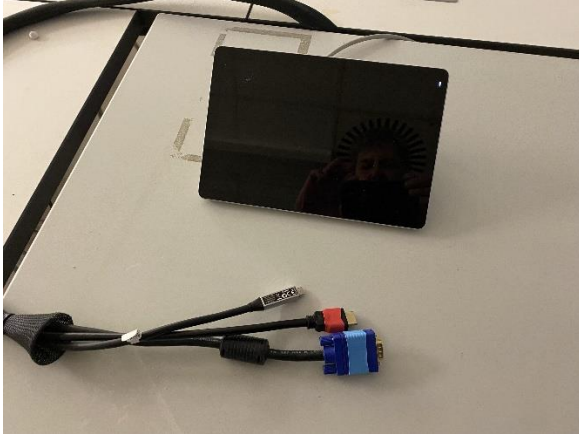
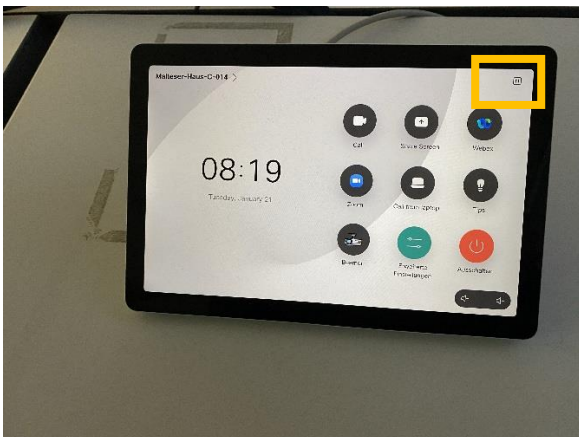


Webex instructions for room C014

Touch the Webextouch to start the system and the projector.
Connect your PC or Mac with the appropriate connector (USB-C, HDMI or VGA) of the cable provided.



Tap the Settings button to access the camera settings.

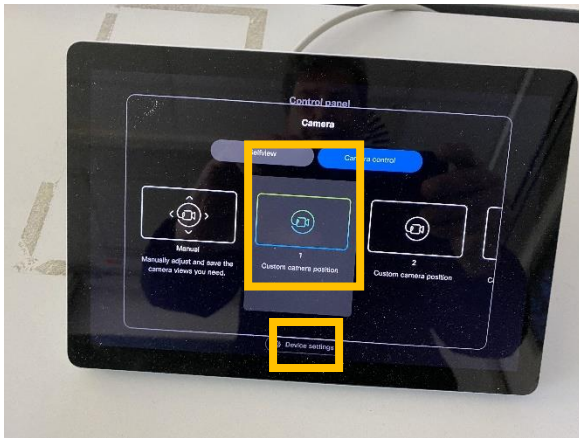


Tap the Camera button.



Medientechnik Geo-Campus Lankwitz: Tel: 030 838 50102 medientechnik@geo.fu-berlin.de
Support for Webex: zedat Tel: 030 838 77777 service@fu-berlin.de
More information about Webex: <https://www.zedat.fu-berlin.de/Telefonie/Konferenzen>

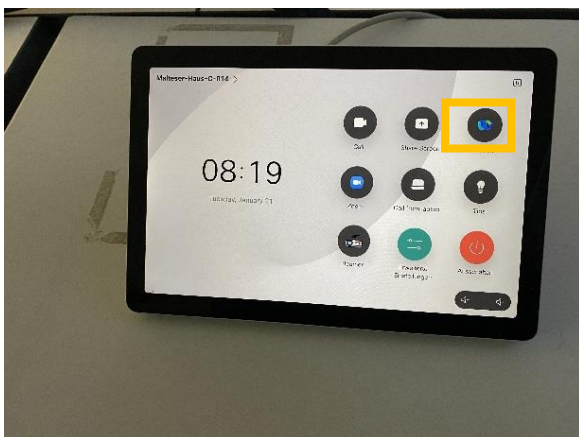
Select "Custom camera position 1" under Camera Control. Then tap "Device settings" to return to the previous page.



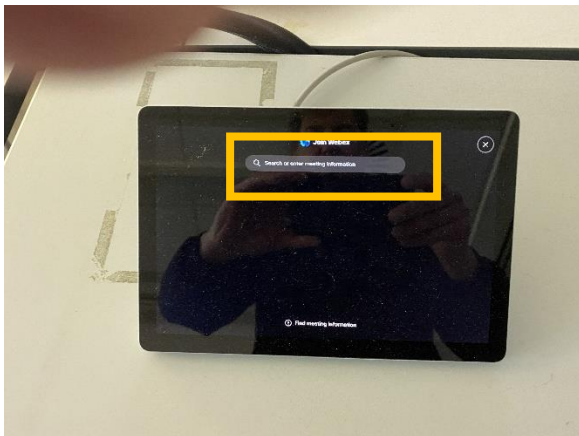
Tap the X to return to the home page.



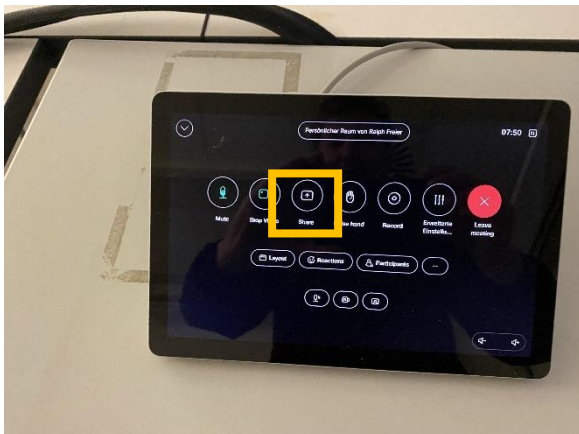
Press the Webex button.



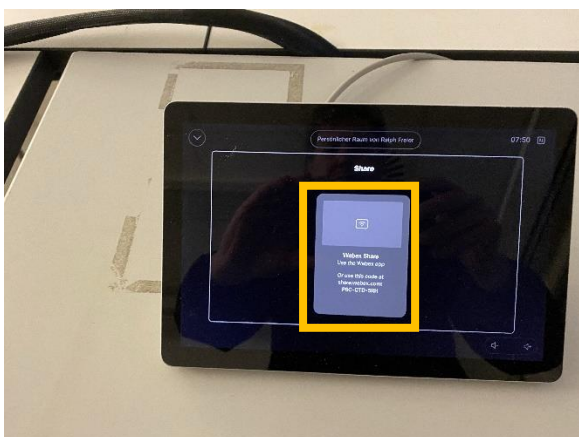
Enter the room number and join the meeting



Now start your presentation on your PC or Mac.
Press "Share" to share your presentation in the meeting.



Now share your presentation



At the end, press "Leave Meeting" to end the meeting.

Medientechnik Geo-Campus Lankwitz: Tel: 030 838 50102 medientechnik@geo.fu-berlin.de
Support for Webex: zedat Tel: 030 838 77777 service@fu-berlin.de
More information about Webex: <https://www.zedat.fu-berlin.de/Telefonie/Konferenzen>