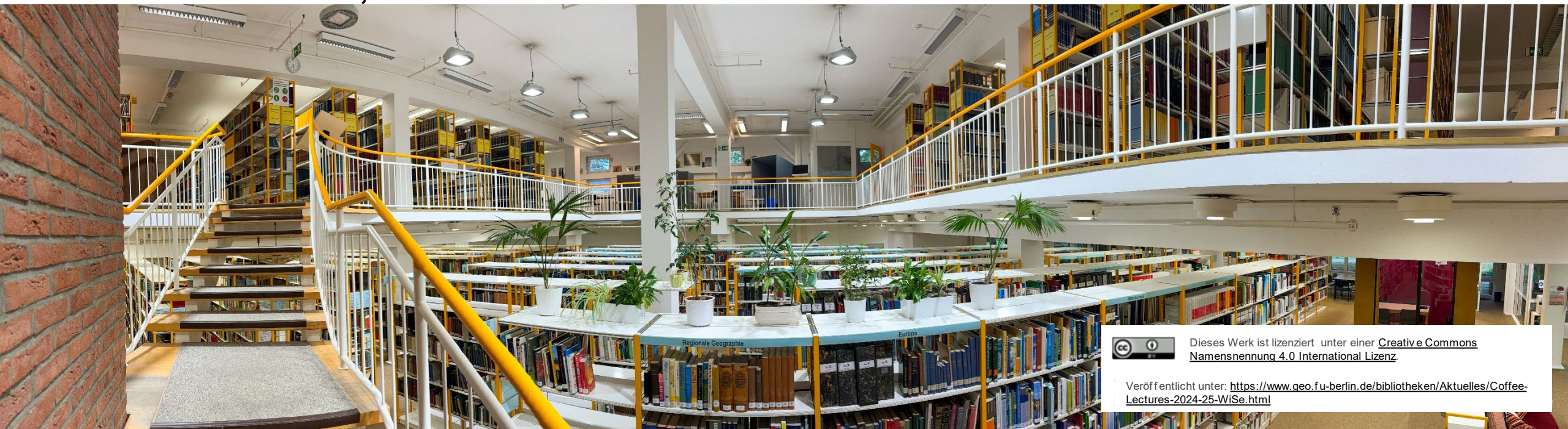


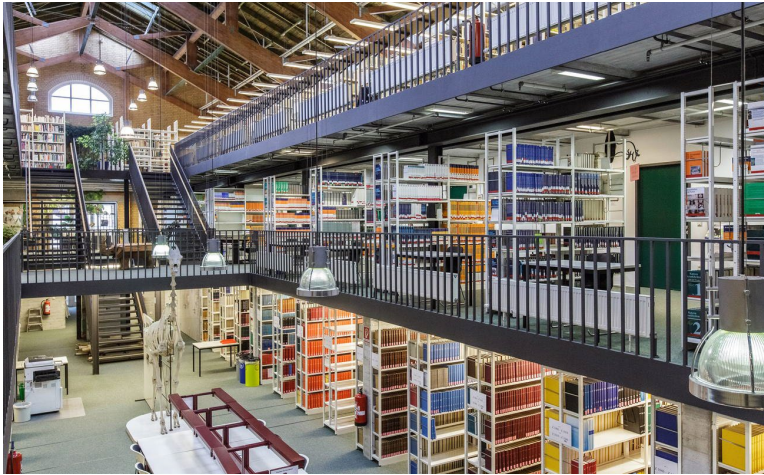
Die Geowissenschaftliche Bibliothek stellt sich vor

Coffee Lecture, 31.10.2024



Dieses Werk ist lizenziert unter einer [Creative Commons
Namensnennung 4.0 International Lizenz](https://creativecommons.org/licenses/by/4.0/).

Veröffentlicht unter: <https://www.geo.fu-berlin.de/bibliotheken/Aktuelles/Coffee-Lectures-2024-25-WiSe.html>



Veterinärmedizinische Bibliothek. Bildquelle Michael Fahrig



Campusbibliothek



Geowissenschaftliche Bibliothek (Lankwitz)

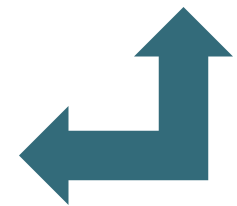
UNIVERSITÄTS BIBLIOTHEK



Philologische Bibliothek.



Meteorologische Bibliothek (Steglitz)



Das Bibliotheksteam

<https://www.geo.fu-berlin.de/bibliotheken/Bibliotheksteam/index.html>

Bestände



GEOWISSENSCHAFTLICHE BIBLIOTHEK
Lageplan / FG

= Geologie
 = Geographie
 = Geographie / Länder

Lehrbuchsammlung - Geographie

- Veg / Verkl / WI / Zoo / Stat / Unw / USSR
- Soz / Sozi / Siedl
- Morph / Nat / Geo / Natur / Geo / Ph / An
- Phys / Polit / Reg / Beogr / S. Eu / Schif
- Morph / Meth / Meteo / Kart
- LaWi / MAs / M. Eu / Hydro
- Anth / Bevö / BioG / Bin / Boden / D
- Didakt / Fernw / Geo / Geogr / HistG

Lehrbuchsammlung - Geologie

- AT / Allg / Anth
- TE / SE
- MI / MT / PA / PI / RE
- M / MG / MA / LX / LA / NS / IN / HY / HU / GP / GC
- AG / FK

Arbeitskabine

Hebeschneider
 Plastikbindegerät
 Hochbett Scanner A3/A4
 A2 Scanner

Eingangs

Notausgang

1.0.G
 -Zeitschriften & Schriftenreihen
 -Signaturen: Kart / Fremd / Didaktik
 -Gruppenbestände
 -FU/BEST Bestand
 KL / Writenbischer s. Leihka

Bibliotheks Computer und ZEDAT Rechner (IMA Logik)

Fachrechner Computer (ohne Login)

Allg.

ME, AG
WI 1-2, BIT

AG, MU, KO
KO (siehe 1.0.G)

Bevö
Wi, LaWi, Aqua

Verkl, Siedl
Oko, Ph, An, Anthr

Siedl, Unw
Regio

Hydro
Meth, Geogr, Phys

Hydro, Boden, Morph
Morph

Gesch, HistG, Veg, Zoo, Bio G, Wiss, Volk, Meteo, Math
Hant, Fort, Biogr, Kongl, Theor, Stat, Recht, WW, Soz, Gender

USA, Can, N. Am, Am
N. Am, W. Am, S. Am

AF, O. As, SO As, S. As
V. As, Kaukas, M. As, S. As (-> 6000)

USSR, Uk, Balk
A, CH

Ung, CSSR, Balt, Pol
NISa

Schla, O. Pr, Pos, Thid, Schif
NISa

Sa, A, Sa
RiP

Meckl, Hess
BaWi

Bin
Bay, Brand

DR, DDR, BRD, D
Geo, Reg, Eta, M. Eu, D

PE, PU, PI 10-12
FA, PI 1-9

GR, PH, KS, MA 7-11
WG, HY, BN, FK, MA 1-6

BE, LA, GC 2-7
RE 7-11, FU, MI, GC 1-2

RE 1-7
SE, TE, MG, HI 1-8



 **Taylor & Francis Online**

Access provided by **FU Berlin**

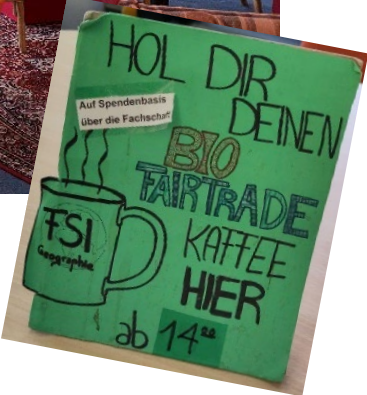
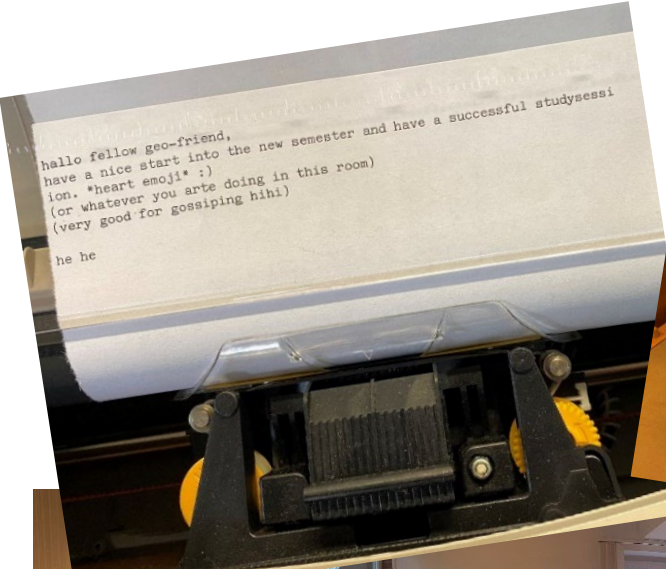




Bibliotheksräume



Bibliotheksräume



Bibliotheksservices

Coffee Lectures

In der Geowissenschaftlichen Bibliothek
Wintersemester 2024/25

Donnerstags 15:15 - 15:45 Uhr
in der Geowissenschaftlichen Bibliothek in
Lankwitz und gleichzeitig online.

SCAN
ME



Online Meeting Link

und Details der
Coffee Lectures,
Präsentationsfolien,
English version



Watkins, K. (2002). "Combating poverty: the impact of US cotton subsidies on Africa." In: *Oxfam Policy and Practice: Agriculture, Food and Land* 2.1, pp. 82–117.

Webster, P. J. (1994). "The role of hydrological processes in ocean-atmosphere interactions." In: *Reviews of Geophysics* 32.4, pp. 427–476.

West, A., K. Hultine, J. Sperry, S. Bush, and J. Ehleringer (2008). "Transpiration and hydraulic strategies in a piñon-juniper woodland." In: *Ecological Applications* 18.4, pp. 911–927.

Wilcox, B. P., D. D. Breshears, and H. Turin (2003). "Hydraulic conductivity in a piñon-juniper woodland." In: *Soil Science Society of America Journal* 67.4, pp. 1243–1249.

Williams, E., G. Hutchings, and M. Wilson (1992). "NOx and CO2 emissions from soil." In: *Global Biogeochemical Cycles* 6.4, pp. 351–388.

Wilson, K. et al. (2002). "Energy balance closure at FLUXNET sites." In: *Agricultural and Forest Meteorology* 113.1, pp. 223–243.

Wong, S., I. Cowan, and G. Farguhar (1979). "Stomatal conductance correlates with photosynthetic capacity." In: *Nature* 282.5737, pp. 424–426.

Wood, E. F., D. P. Lettenmaier, and V. G. Zartarian (1992). "A land-surface hydrology parameterization with subgrid variability for

— (2019). "Looking up or looking down? Hydrologic and atmospheric perspectives on precipitation and evaporation variability." In: *Geophysical Research Letters* 46.21, pp. 11988–11971.

— (2020). "Radiative effects of daily cycle of cloud frequency in past and future climates." In: *Climate Dynamics* 54.3–4, pp. 1625–1637.

Yin, J., A. Porporato, and J. Albertson (2014). "Interplay of climate seasonality, soil moisture-rainfall feedbacks, and climate resources." In: *Water Resources Research* 50.7, pp. 4876–4893.

Yin, J., J. D. Albertson, J. A. Rigby, and A. Porporato (2010). "Hydrologic and atmospheric controls on the timing and intensity of moist convection: CAPE dynamics and LCL crossings." In: *Water Resources Research* 46.10, pp. 476–8493.

Yin, J., A. Porporato, E. Daly, and A. Porporato (2011). "The energy side of Budyko: surface-energy partitioning from hydrological observations." In: *Geophysical Research Letters*.

Zaitsev, V. F. and A. D. Polyani (2012). *Handbook of Exact Solutions for Ordinary Differential Equations*. CRC Press, 791 pp.

Zea-Cabrera, E., Y. Iwasa, S. Levin, and I. Rodríguez-Iturbe (2006). "Tragedy of the commons in plant water use." In: *Water Resources Research* 42.6.

Zelenov, V., A. Van Bruggen, and A. Semenov (2000). "BACWAVE: a spatial temporal model for traveling waves of bacterial populations in response

Wissenschaftlich
arbeiten

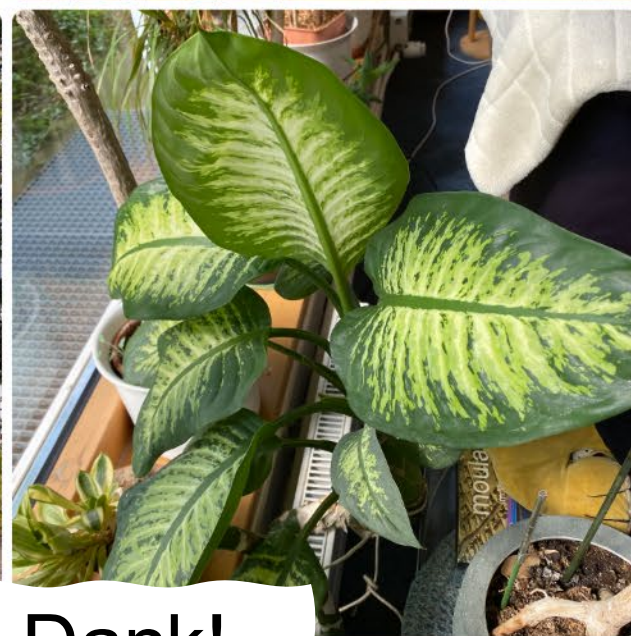
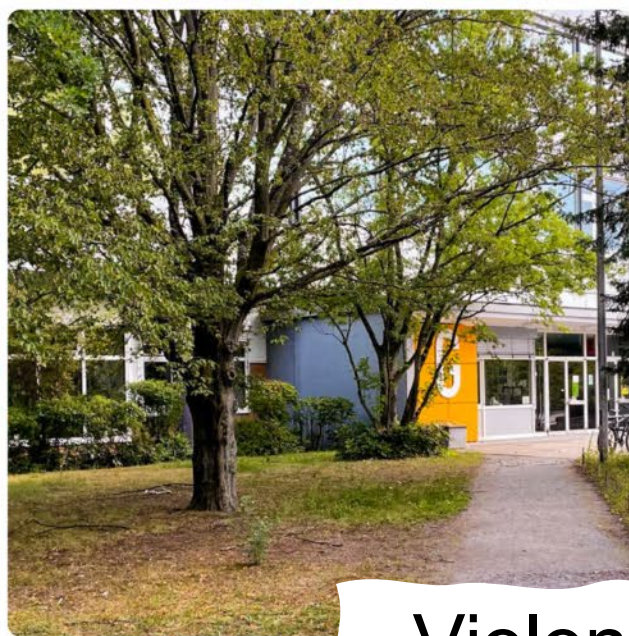
Freie Universität Berlin



BIBLIOTHEKSPORTAL PRIMO



... und viel mehr!



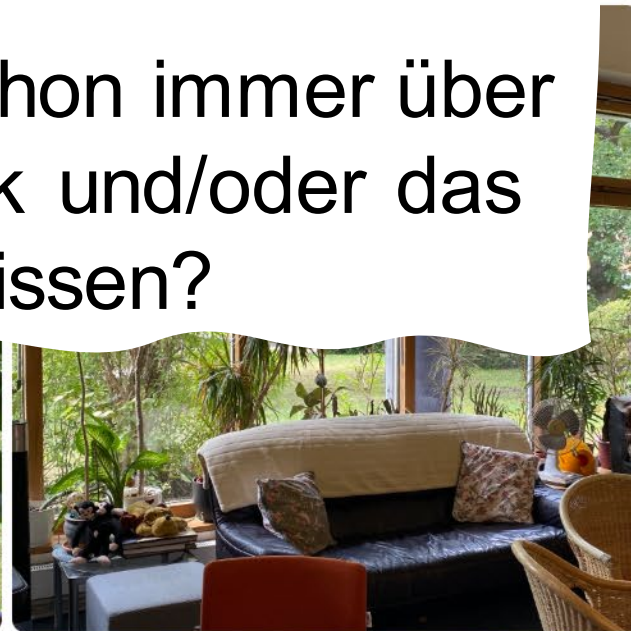
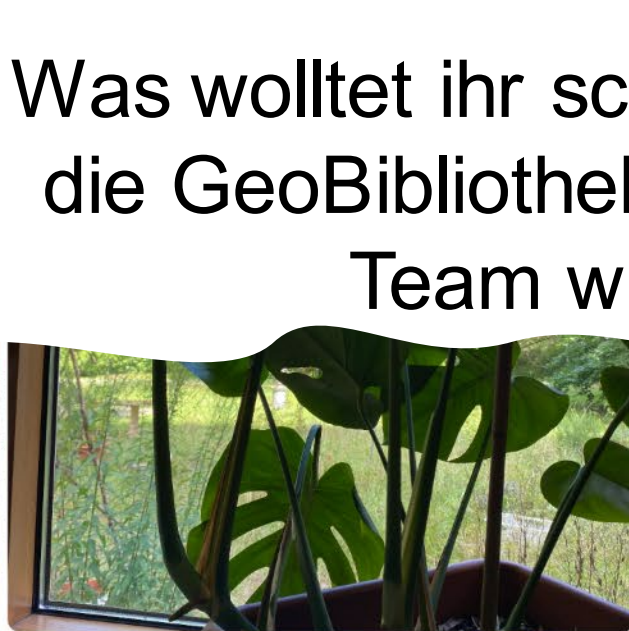
Vielen Dank!





Raum für Fragen

Was wolltet ihr schon immer über
die GeoBibliothek und/oder das
Team wissen?



Wer nutzt die Bibliothek?

**FREIE
UNIVERSITÄT**



FU/BEST

FUBiS

